

BLUEPRINTS

BUILDING GENERATIONS ON A FOUNDATION OF FAITH

A Great Opportunity

CORNERSTONE
CHURCH



BluePrints Reflections

Andy Kvernen, Senior Pastor

I was reminded recently of the first time our family came to Marshfield. It was 2017 between Christmas and the New Year, and it was quiet, cold, and because many people were out of town for the holidays, it felt desolate. We didn't tell anyone we were coming, and so we ate lunch by ourselves at the Dairy Queen (a smart choice on a cold day, right?!). Not another soul was in the restaurant, other than the person who took our order!

And as we drove around town afterwards, though we were captivated by much of its charm and beauty (there were no trees where we came from in North Dakota), we left that day with many questions, wondering if this really was where God was calling us.

That all changed when we came back a couple of months later and met the people. The rest, as they say, is history! We were not only drawn to the authentic and down to earth demeanor of those we met, but also to their heart for the Lord and their desire to be used by Him to impact this community and beyond for the name of Jesus Christ!

Cornerstone is an EFCA church that was founded in 2000 by the Forest Lakes District and several Marshfield families, and God had his hand on us from the beginning. From calling our first Pastor, Larry Jones, to worshiping in Grant Elementary in the early years, to purchasing the Blue Building on our current property and then soon expanding with a new worship center, to two years of interim senior pastors and the hiring of our current one, to adding staff and paying off our debt, to clarifying our vision in a variety of ways, God has been equipping us to live out our mission in all shapes and forms for over twenty-four years. And, praise God, Marshfield and this region are not the same because of it!

And in this current season of growth, as we continue to pursue our mission to be a biblical community that loves God, grows people, serves our city, and reaches the world, we're trusting God to lead us into a vibrant, God-glorifying, and world-impacting future.

That's why I'm so excited about the BluePrints campaign... not because we're building our own kingdom, but because we're passionate about building His, about building generations on a foundation of faith!

And so, as we experience record numbers of kids, students, and adults coming to Cornerstone in their pursuit of Jesus, we have the opportunity to influence generations for decades to come by providing the space necessary to facilitate this disciple making passion and calling!

I pray that as you interact with this pamphlet, and as you converse with your family, friends, and most importantly with God, that you'll catch the vision. Kristi and I are certainly discussing what this means for our family and prayerfully excited about our own commitment to the BluePrints campaign. I hope you'll join us in making this vision become a reality!

Let our team know your questions and thoughts. Let's keep talking! And may God be glorified in all of us as we pursue Him together!

In Christ,
Pastor Andy

Cornerstone's Mission In Action

Our Mission is to be a biblical community that...



Loves God

Deut 6:5; Matt 22:37–38



Grows People

Matt 22:39; Eph 2:19–21; 4:15



Serves Our City

Jer 29:7; Acts 1:8a



Reaches the World

Matt 28:18–20; Acts 1:8b

Growing People

A student who began coming to Cornerstone Student Ministries this year and had never really been to church before let Pastor Matt know that he decided to put his faith in Jesus. He's been coming to CSM since the fall and has seen what it looks like to walk with Jesus by watching the community that exists there. And he heard what it means to trust Jesus by listening to the teaching he's received. And now, he'll be disciplined in his faith by engaging with the Christ-followers who will care for him there!

Reaching the World

“We feel that God has really used our Cornerstone family in a special way as He has moved us into a cross-cultural context of disciple making. Our time spent serving on the Mission Team was instrumental in creating bridges that God has subsequently used to sharpen and clarify His call on our lives to make passionate followers of Christ (in our region and beyond!). We have the feeling that we are not so much leaving Cornerstone as we travel overseas, but rather taking Cornerstone with us as we represent Christ together in a dying world! As we invest together in God's mission, we invest together in eternity.”

Josh & Megan Smith
Preparing for Missions in Guatemala



Cornerstone's Measurable Growth: 2022 to 2023



In-Person Sunday +16%

Infant - 12th Grade +27%



Kidz Rock +5%

CSM +28%



Fiscal Growth +7%

"Four years ago, we had about six kids in our 3rd and 4th grade Dig In classes on Sunday mornings. We're now seeing up to 26 kids in our room and it's constantly growing. With that many kids, our room is undersized and we're being squeezed for space."

John Franseen
Kids Small Group Leader



Building Pinch Points

Kids & Students

Our kids and students are challenging our capacity.

- Kids and Students meeting on different nights
- PreK-K lack adequate security
- Small Group spaces regularly exceed 150% of recommended capacities
- Lobby areas often congested



Adult Discipleship

Adults are running into each other in several places including evenings and Sunday mornings as our various ministries continue to grow.

Building Pinch Points

Office Space

We don't have enough office space for our current staff. The administrative wing was constructed during a time when our church was much smaller. As a result, we are short on appropriate office space to accommodate our pastoral staff. Additionally, our workspace is often crowded and inefficient.



Community's Perspective

People's outside perception doesn't match their inside experience. Presenting a welcoming appearance is an important step to fulfilling our mission.



Project Goals & Objectives

1. Strengthen Identity to Community

Welcome | Clarity | Inviting | Attractive

2. Quality Kids/Student Space

Dedicated | Secure | Flexible

3. Adult Discipleship Space

Comfortable | Flexible | 20 & 50

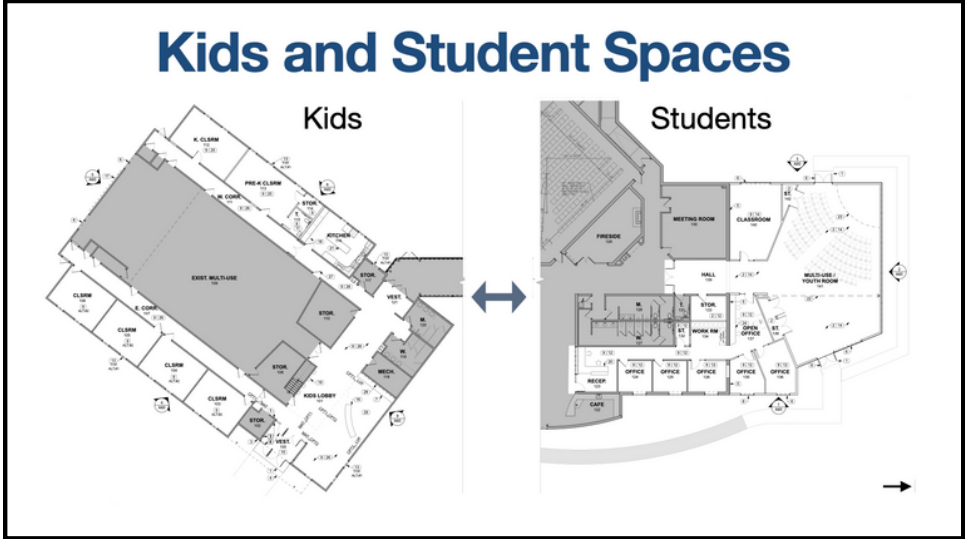
4. Synergistic Team Building Space

Weekday Hospitality | Disciple making |

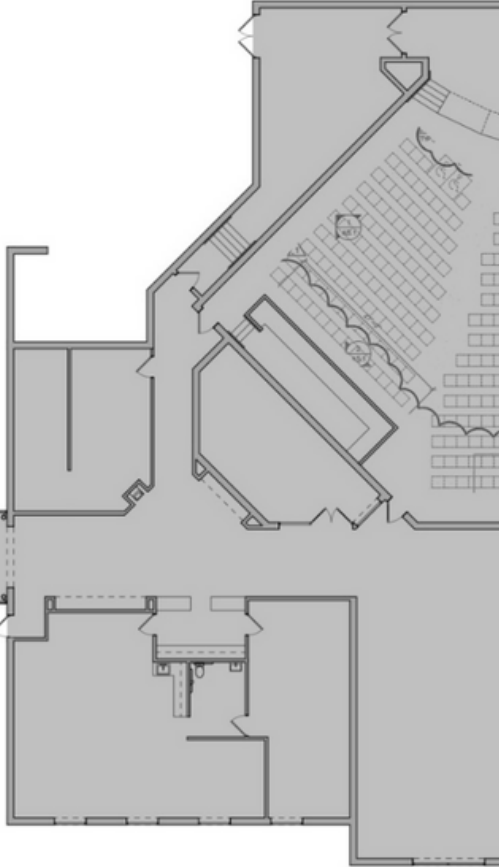
Collaboration | Mentorship



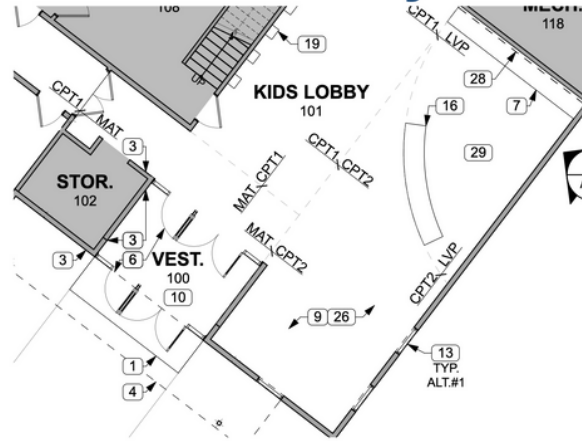
Kids & Student Spaces



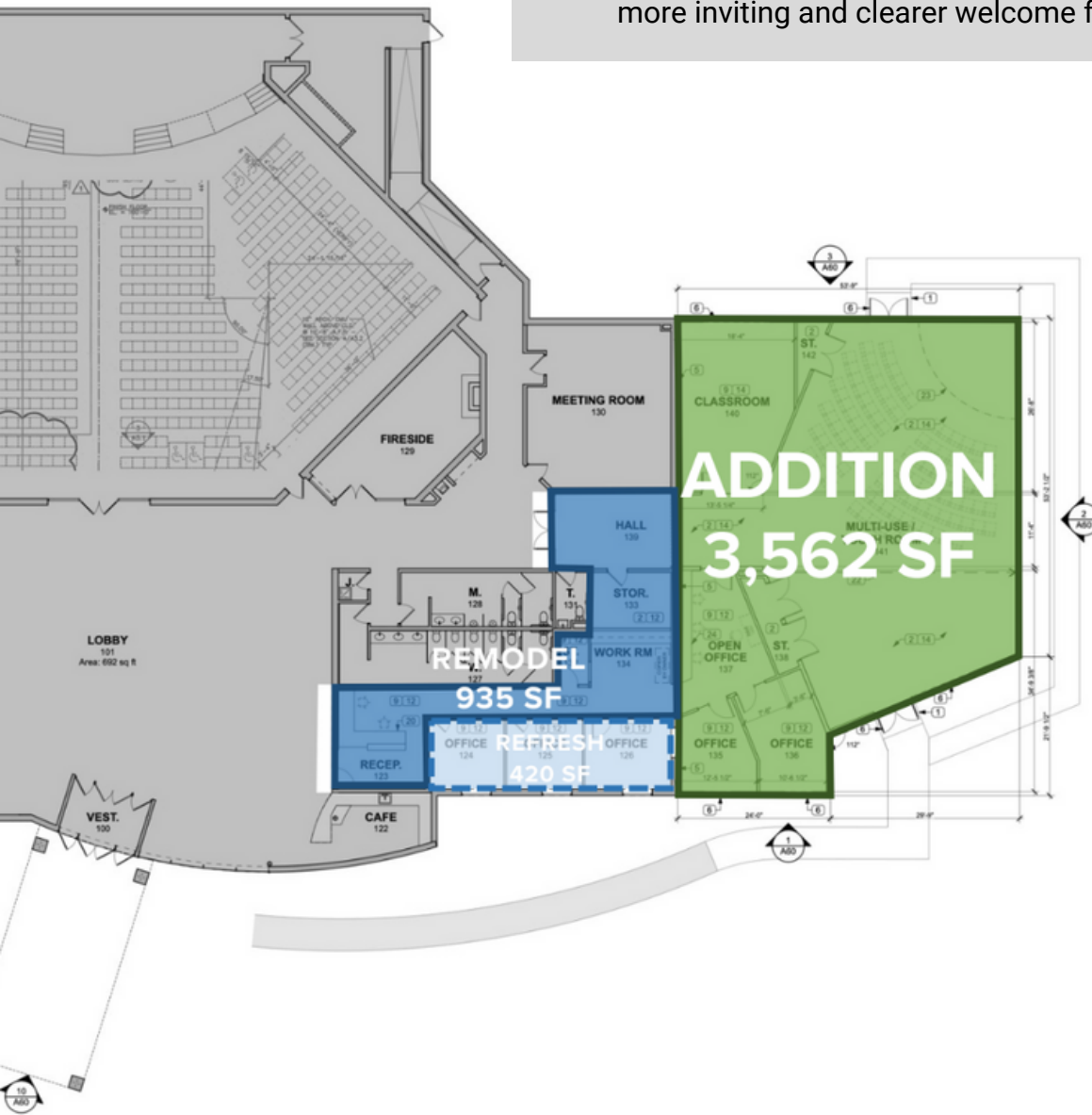
Dedicated Kids and Student spaces to allow for greater programming flexibility and growth.



Kids Lobby

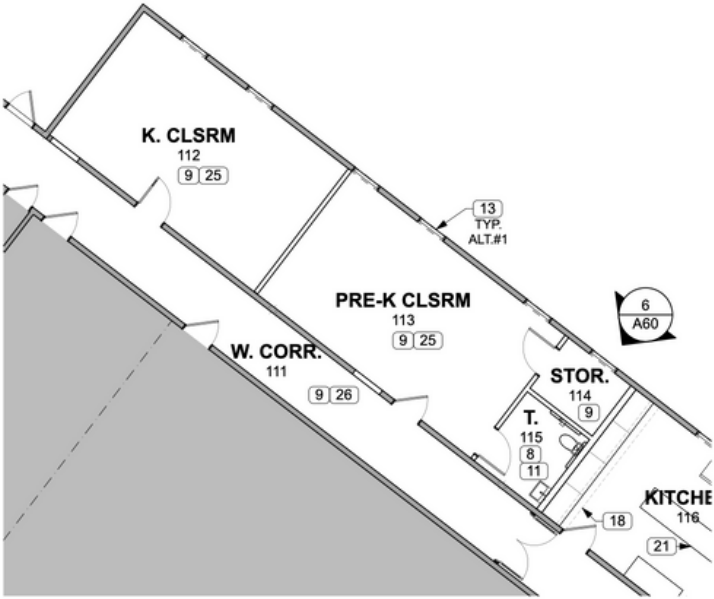


Parents growing deeper in a more hospitable space. A more inviting and clearer welcome for families.



Kids & Student Spaces

Kids PreK and K



Larger and more age-appropriate space for play and learning. Better layout for security. Kitchen accessible during kids programming.

Kids Small Group Space

With students moving to the north, more flexibility for kids small groups and deeper community.

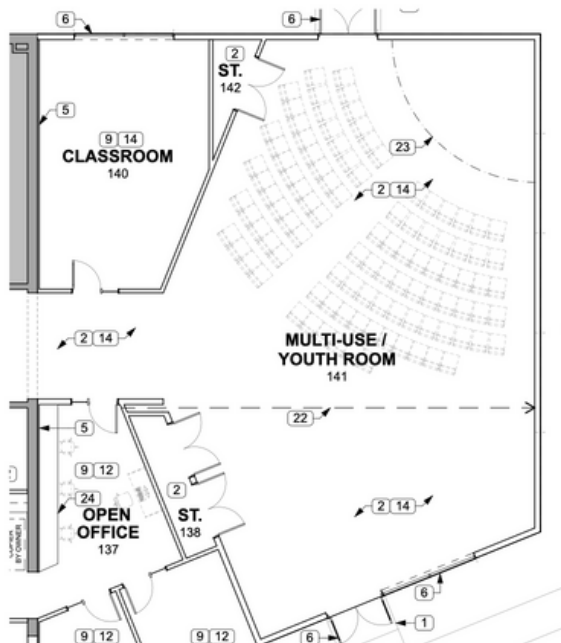


New windows adding natural light. More play options. Better large group teaching and learning.

Kids Worship



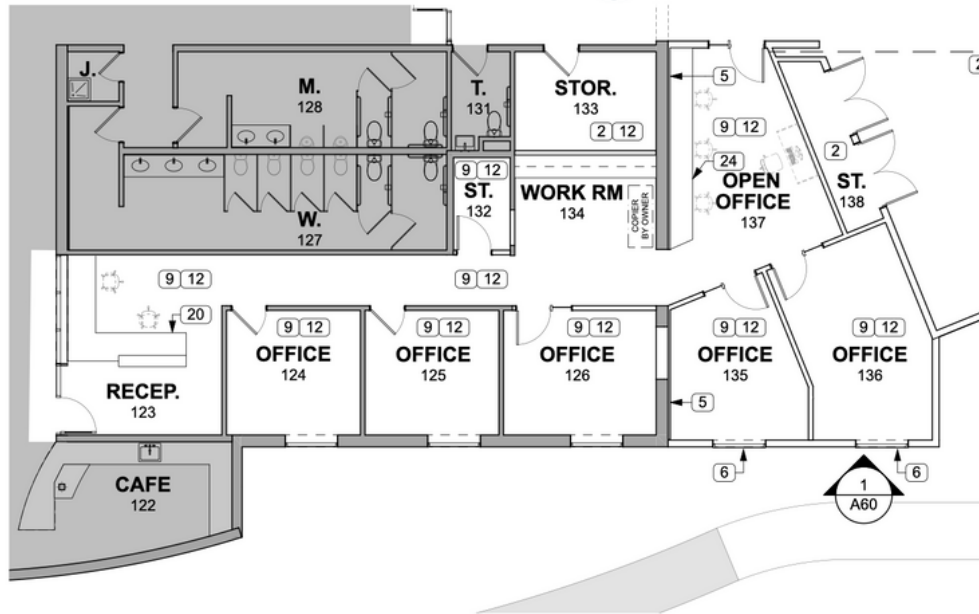
Students



Greater flexibility for all ages. Students and kids now able to meet the same time mid-week and Sunday morning. More age-appropriate space for 7th through 12th grade.

Addition to Administrative Wing

Team Building/Offices



A remodeled reception area to make it more inviting and to help our administrative staff have a better view to the front door of the building. Also, a north addition to accommodate our growing team, creating three new office spaces, a work room, and additional storage.

"Currently our office is a busy place as people come in throughout the day from the church and the community. The workroom accommodates 4 admins and an army of volunteers all trying to accomplish a variety of projects. This makes the office a crowded place to work and presents challenges to those who are trying to accomplish their daily tasks."

Robyn Mader
Administrative Assistant

Envisioning the Completion of our Campaign



A “real life” rendering of the multi-use addition on the north side of the building. Space primarily used for youth and other adult needs.



A “real life” rendering of the south side of the current “Blue Building.” Features include attractive, durable paneling, a new roof, windows letting natural light into children’s area, and a cross/logo on the face of the building. This will dramatically strengthen our identity to the community and create a welcoming “front door” that is both inviting and attractive.

How Much Will This Cost?

\$3.6 Million Target Goal

A. Remodel Blue Building

- Enlarge lobby area to alleviate congestion
- Relocate PreK & K students to larger and more secure area of the building
- Remodel kitchen to make for better workflow and increase efficiency
- New roof, siding, and windows to enhance the aesthetics of the facility
- Add cross/logo to the south side to better identify our mission

B. Add Multipurpose Center to the North

- Allows students and kids to meet on the same night midweek and have more room on Sundays
- Large gathering space for workshops, activities, meetings, and celebrations including wedding receptions and funerals
- Stage area for worship and teaching
- Separate classroom
- Storage area

C. Add Office Space to Administrative Wing

- Administrative office rearranged to better accommodate visitors
- Added window between reception desk and lobby
- Three additional offices added for pastors and staff
- Enlarge dedicated workroom for copy machine and projects
- Additional storage area

\$8 Million Dream Goal

Add Gymnasium onto New Multipurpose Addition

- Gym to accommodate youth sports programs, regular kids programming, and opportunities to serve our city
- Permanent multipurpose space for student ministry and to accommodate more seating for a variety of events
- New multipurpose space (Phase 1) becomes lobby and entrance for the gym

How Can I Participate?

Through our Blueprints Campaign, we are asking our Cornerstone Church family to engage in a willing and sacrificial financial commitment over the next 3 years.

CONSIDER VARIOUS GIVING METHODS

- 1. Income:** What can you redirect, change, reduce, or omit from your regular budget?
- 2. Assets:** Cash, investments, real estate, collectables
- 3. Future Income:** Tax refund, distributions, bonuses, raises/promotions

GIVE CREATIVELY

Here are some ideas to consider when giving sacrificially:

- Make your coffee or lunch at home
- Hold a garage sale
- Make a gift in honor or memory of someone
- Cancel unused subscriptions or memberships
- Designate part of your tax refund or yearly bonus
- Work an extra shift at work
- Sell something you no longer need
- Hold a bake sale or lemonade stand as a family activity
- Postpone a new car or home project
- Downsize a vacation
- Give appreciated stock
- Donate a paid-up whole life insurance policy
- Explore for a matching contribution from employer

Talk with your tax advisor for additional ideas.

KNOW THAT EVERY GIFT MATTERS

As a collective project among the entire congregation, it's important to know that any gift, no matter the amount, will help achieve the objective at hand. Luke 21 tells us the poor widow who put in two pennies gave the largest offering of them all and God blessed her sacrifice accordingly.

PRAY

Pray that God will reveal all He has entrusted under your stewardship. Ask God for a spirit of gratitude and contentment. Invite Him to lead you in your response to this invitation.

Monthly Annually Three Years

This chart may be helpful in determining your total commitment to this campaign.

For many, their commitment may vary from year to year.

You can commit a different amount each year.

	Monthly	Annually	Three Years
\$25		\$300	\$900
50	50	600	1,800
75	75	900	2,700
100	100	1,200	3,600
150	150	1,800	5,400
200	200	2,400	7,200
250	250	3,000	9,000
300	300	3,600	10,800
400	400	4,800	14,400
500	500	6,000	18,000

Our Vision...

Reproduce disciple-making communities throughout our region and beyond that transform all peoples into passionate followers of Christ!

Psalm 127:1

“Unless the Lord builds the house, those who build it labor in vain.”



Cornerstone Community Church
1417 W. McMillan St.
Marshfield, WI 54449
cornerstonemarshfield.com